

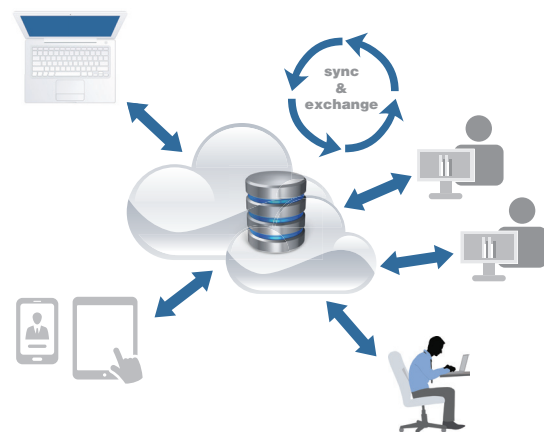


B2DROP
Sync and Exchange Research Data

B2DROP is a **secure and trusted data exchange service** for researchers and scientists to keep their **research data synchronized and up to date and to exchange with other researchers.**

B2DROP allows users to:

- **Store and exchange** data with colleagues and team members.
- **Synchronize** multiple versions of data.
- Ensure **automatic desktop synchronization** of large files.

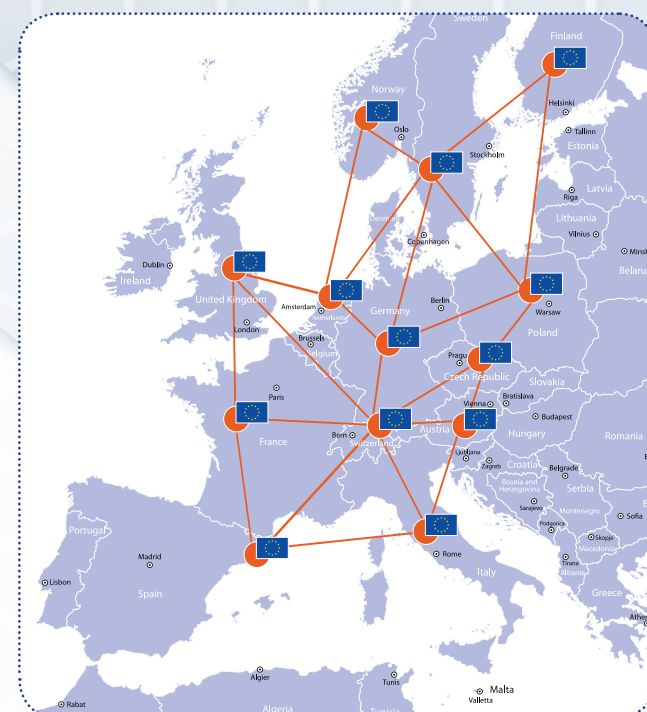


Users can:

- **define with whom to exchange data**, for how long and how
- **receive up to 20GB of storage space** for research data
- **access and manage permissions** to files from any device and any location

The service is **simple to use** and open to any researchers, scientists, communities who wish to **synchronize and exchange data with one or multiple users.** B2DROP will be fully integrated with the B2 suite of services to allow user-friendly data sharing.

b2drop.eudat.eu



EUDAT
B2 Service Suite
Research Data Services,
Expertise and Technology
Solutions

WWW.EUDAT.EU



The EUDAT project is co-funded by the European Commission's 7th Framework Programme (Grant Agreement no: 283304)



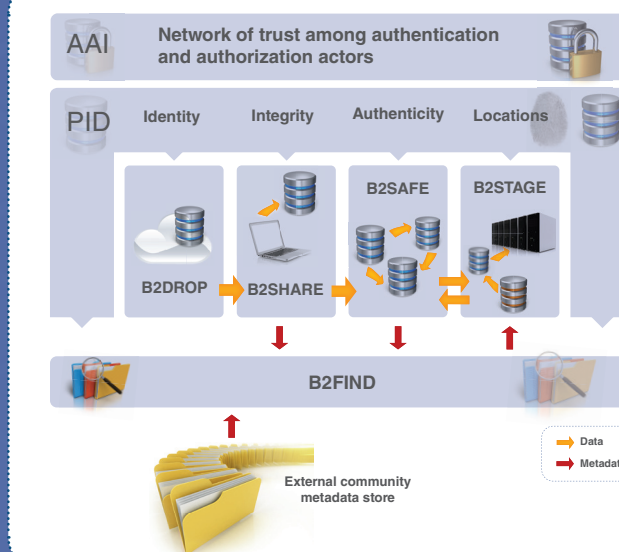
facebook.com/EUDAT
linkedin.com/pub/eudat-project/51/a45/30a
twitter.com/Eudat_eu

How can EUDAT's services help you?

EUDAT offers common data services which support research communities and individuals through a network connecting general-purpose data centres and community-specific data repositories.

These shared services and storage resources are distributed across 15 European nations and data is stored alongside some of Europe's most powerful supercomputers.

The B2 Service Suite



B2DROP: synchronize and exchange research data

B2SHARE: store and share research data

B2SAFE: manage data and optimize access

B2STAGE: transfer data to HPC workspaces for processing

B2FIND: find collections of scientific data quickly and easily



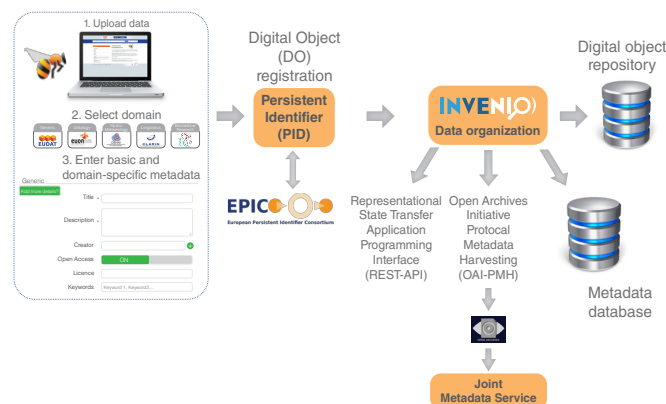
B2SHARE

Store and Share Research Data

A **user-friendly, reliable** and **trustworthy** way for researchers, scientific communities and citizen scientists to **store and share small-scale research data** from diverse contexts.

B2SHARE allows users to:

- **Store:** facilitating research data storage.
- **Preserve:** guaranteeing long-term persistence of data.
- **Share:** allowing data, results or ideas to be shared worldwide.



B2SHARE features

- integrated with the **EUDAT collaborative data infrastructure**
- **free upload and registration** of stable research data
- data assigned a **permanent identifier**, which can be retraced to the data owner
- **data owner defines access policy**
- **community-specific metadata extensions** and **user interfaces**
- **openly accessible** and **harvestable metadata**
- **representational state transfer application programming interface (REST API)** for integration with community sites
- **data integrity ensured by checksum** during data ingest
- **professionally managed storage service** – no need to worry about hardware or network
- **EUDAT user support**
- **monitoring of availability and use**



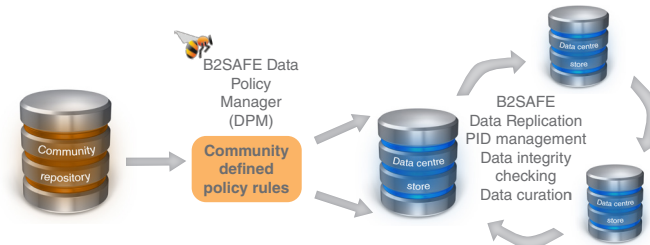
B2SAFE

Replicate Research Data Safely

A **robust, safe and highly available service** which allows community and departmental repositories to **implement data-management policies on their research data** across multiple administrative domains in a trustworthy manner.

B2SAFE is a solution which:

- Provides an **abstraction layer which virtualizes large-scale data resources**.
- Guards against data loss in long-term **archiving and preservation**.
- **Optimizes access** for users from different regions.
- Brings **data closer to powerful computers** for compute-intensive analysis.



B2SAFE features

- based on the execution of **auditable data policy rules and the use of persistent identifiers (PIDs)**
- respects the **rights of the data owners** to define the **access rights for their data** and to decide how and when it is made **publicly referenceable**
- data policies are **centrally managed via a Data Policy Manager**, and the policy rules are implemented and enforced by **site-local rule engines**
- able to **aggregate data from different disciplines** into a storage system of **trustworthy and capable data service providers**
- support for **repository packages** (e.g. DSPACE, FEDORA) and a **lightweight HTTP-based solution**



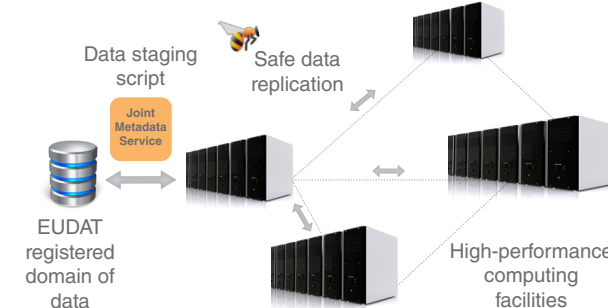
B2STAGE

Get Data to Computation

A **reliable, efficient, lightweight and easy-to-use** service to **transfer research data sets** between EUDAT storage resources and high-performance computing (HPC) workspaces.

B2STAGE allows users to:

- **Transfer** large data collections from EUDAT storage facilities to external **HPC facilities for processing**.
- **Replicate community data sets**, ingesting them onto EUDAT storage resources for long-term preservation, in conjunction with B2SAFE.
- **Ingest computation results** into the EUDAT infrastructure.
- Access data through a **RESTful HTTP interface**.



B2STAGE features

- an **extension of B2SAFE and B2FIND**
- **data-staging script** facilitates staging, ingestion and retrieval of persistent identifier (PID) information of transferred data
- service available to **all registered researchers and interested communities**
- **users negotiate access to remote HPC services in parallel**
- **collaboration with other infrastructures**, such as the European Grid Infrastructure (EGI) and Partnership for Advanced Computing in Europe (PRACE)
- **documentation, educational material and service helpdesk**



B2FIND

Find Research Data

A simple, user-friendly **metadata catalogue of research data collections** stored in EUDAT data centres and other repositories.

B2FIND allows users to:

- **Find** collections of scientific data quickly and easily, irrespective of their origin, discipline or community.
- Get quick **overviews** of available data.
- Browse through collections using **standardized facets**.



B2FIND features

- based on a **comprehensive joint catalogue of EUDAT services and external metadata**
- **metadata is mapped onto standardized facets**
- **supports faceted, geospatial and temporal metadata searches**
- allows users to **search and browse datasets via keyword searches**
- results displayed in **user-friendly format and listed in order of relevance**
- access to the **scientific data objects** is given through **references provided in the metadata**
- initially available for communities in the EUDAT registered domain of data
- EUDAT will then extend the service to **other interested and reliable data and metadata providers**